

**SUBDIVISION PLAN OF PART OF LOT 6
SECTION 1 TOWNSHIP 3 RANGE 29 WEST OF THE
SIXTH MERIDIAN NEW WESTMINSTER DISTRICT PLAN 27561
EXCEPT: FIRSTLY; PART SUBDIVIDED BY PLAN 27756
SECONDLY; PARCEL A (STATUTORY RIGHT OF WAY PLAN 17235)
THIRDLY; PART SUBDIVIDED BY PLAN 84817
FOURTHLY; PART DEDICATED ROAD ON PLAN LMP4432
FIFTHLY; PART SUBDIVIDED BY PLAN LMP17398
SIXTHLY; PART SUBDIVIDED BY PLAN BCP33800.**

BCGS 92H.012

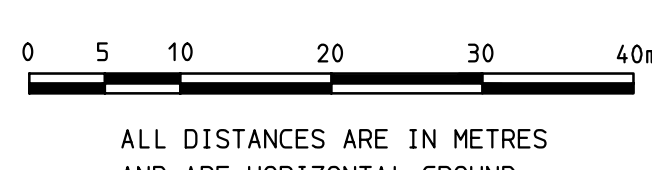


NOTE:
THIS PLAN SHOWS ONE OR MORE WITNESS POSTS WHICH ARE NOT SET ON THE TRUE CORNER(S).

GRID BEARINGS ARE DERIVED FROM DIFFERENTIAL DUAL FREQUENCY GNSS OBSERVATIONS AND ARE REFERRED TO THE CENTRAL MERIDIAN OF UTM ZONE 10 NORTH (123° WEST LONGITUDE).

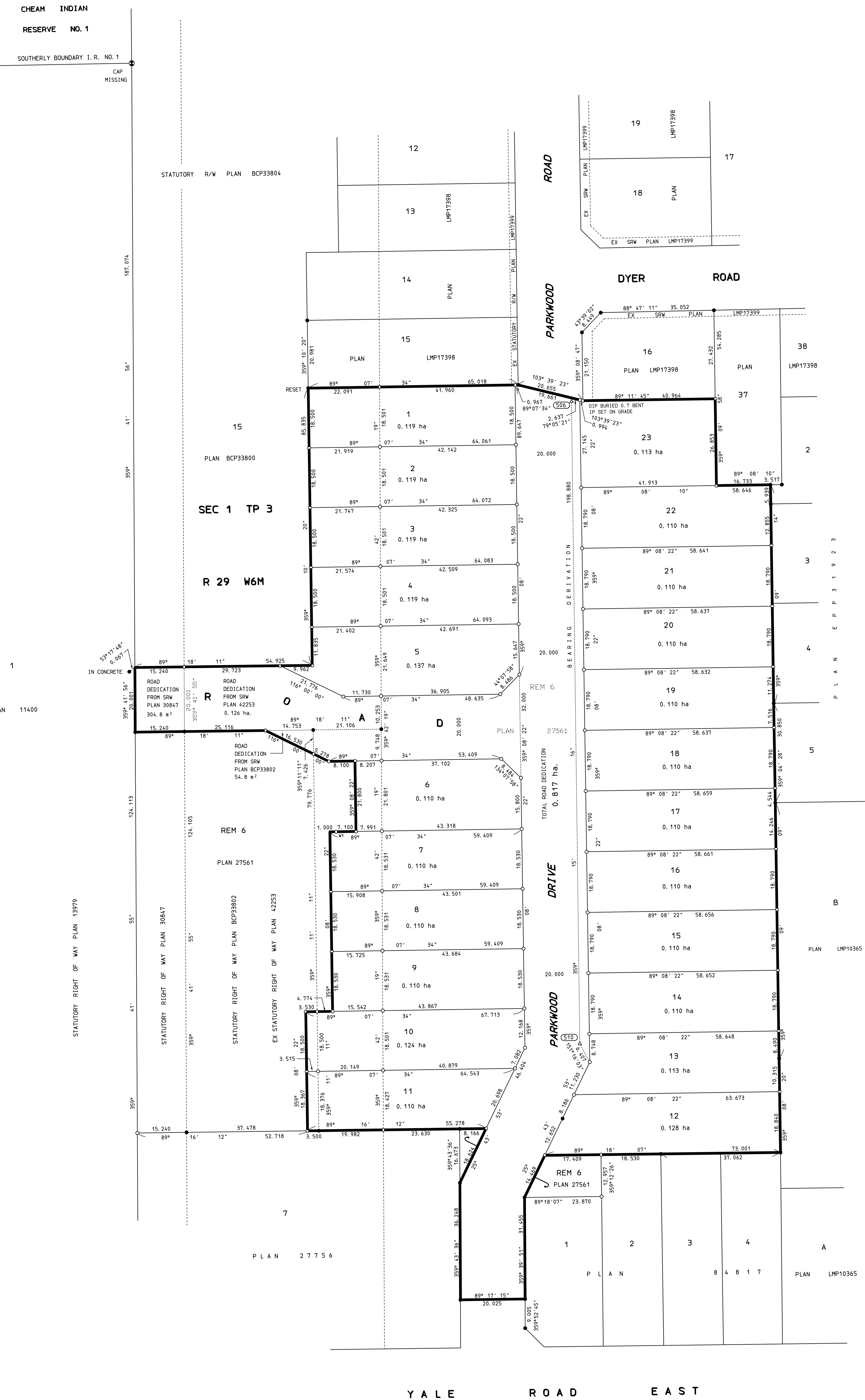
THE UTM COORDINATES AND ESTIMATED HORIZONTAL POSITIONAL ACCURACY ACHIEVED ARE DERIVED FROM DUAL FREQUENCY GNSS OBSERVATIONS TO SPATIAL TECHNOLOGIES BASE STATION CHILLIWACK. THIS STATION HAS BEEN POSITIONED AND VERIFIED VIA 24 HOURS OF DUAL FREQUENCY GNSS OBSERVATIONS PROCESSED USING CORS-PPP ONLINE PROCESSING PROVIDED BY NATURAL RESOURCES CANADA.

THIS PLAN SHOWS HORIZONTAL GROUND-LEVEL DISTANCES UNLESS OTHERWISE SPECIFIED. TO COMPUTE GRID DISTANCES, MULTIPLY GROUND-LEVEL DISTANCES BY THE AVERAGE COMBINED FACTOR OF 0.99969278. THE AVERAGE COMBINED FACTOR HAS BEEN DETERMINED BASED ON A MEAN ELLIPSOIDAL ELEVATION OF 14.78 METRES.



THE INTENDED PLOT SIZE OF THIS PLAN IS 864 mm IN WIDTH BY 1120mm IN HEIGHT (IE SIZE) WHEN PLOTTED AT A SCALE OF 1: 500

DATUM: NAD83 (CSPS) 2002.0 UTM ZONE 10 NORTH HTV2.0			
ESTIMATED HORIZONTAL POSITIONAL ACCURACY IS 0.1 METRES			
GNSS POINT	UTM NORTHING	UTM EASTING	COMBINED SCALE FACTOR
506	N 5448918.8	E 589242.6	0.99969258
510	N 5448719.9	E 589245.2	0.99969298



THIS PLAN LIES WITHIN THE JURISDICTION OF THE APPROVING OFFICER FOR THE MINISTRY OF TRANSPORTATION AND INFRASTRUCTURE

THIS PLAN LIES WITHIN THE FRASER VALLEY REGIONAL DISTRICT.

THE FIELD SURVEY REPRESENTED BY THIS PLAN WAS COMPLETED ON THE 14TH DAY OF JUNE, 2016.
ALLAN W. TUNBRIDGE BCLS 703

TUNBRIDGE & TUNBRIDGE
BRITISH COLUMBIA LAND SURVEYORS
CANADA LANDS SURVEYORS
6-7945 VENTURE PLACE, CHILLIWACK, B. C.
PHONE: 604-792-4264 ALLANT@TUNBRIDGE.CA
FILE: G023508 FBC349/9-20 AWT