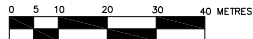


**SUBDIVISION PLAN OF LOT 43 PLAN 52843
 LOT 44 PLAN 52843
 LOT 46 PLAN 55604
 SECTION 6 TOWNSHIP 3 RANGE 28 WEST OF THE SIXTH MERIDIAN
 NEW WESTMINSTER DISTRICT**

PLAN EPP67048

BCGS 92H.012

SCALE 1 : 500



ALL DISTANCES ARE HORIZONTAL GROUND-LEVEL DISTANCES IN METRES AND DECIMALS THEREOF

THE INTENDED PLOT SIZE OF THIS PLAN IS 560mm IN WIDTH BY 864mm IN HEIGHT (0 SIZE) WHEN PLOTTED AT A SCALE OF 1 : 500

GRID BEARINGS ARE DERIVED FROM DIFFERENTIAL DUAL FREQUENCY GNSS OBSERVATIONS AND ARE REFERRED TO THE CENTRAL MERIDIAN OF UTM ZONE 10 (123° WEST LONGITUDE).

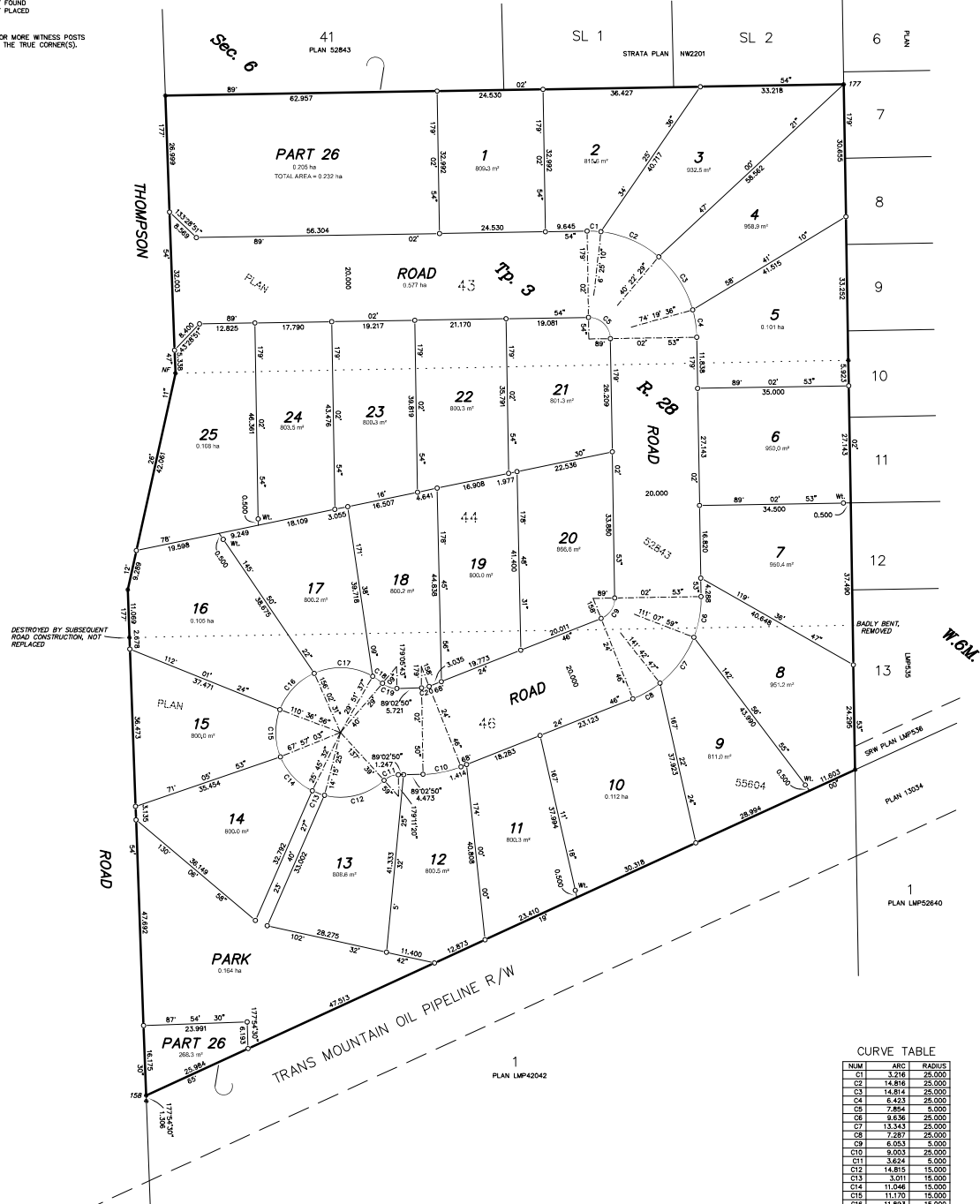
THE UTM COORDINATES AND ESTIMATED HORIZONTAL POSITIONAL ACCURACY ACHIEVED ARE DERIVED FROM DUAL FREQUENCY GNSS OBSERVATIONS TO CANADIAN ACTIVE CONTROL STATION CHRM (NRCAN STATION No. 987020).

THIS PLAN SHOWS HORIZONTAL GROUND-LEVEL DISTANCES UNLESS OTHERWISE SPECIFIED. TO COMPUTE GRID DISTANCES, MULTIPLY GROUND-LEVEL DISTANCES BY THE APPROPRIATE CORRECTION FACTOR AS DERIVED FROM THE COMBINED FACTORS NOTED IN THE COORDINATE TABLE.

LEGEND:

- STANDARD IRON POST FOUND
- STANDARD IRON POST PLACED

NOTE:
 THIS PLAN SHOWS ONE OR MORE WITNESS POSTS WHICH ARE NOT SET ON THE TRUE CORNER(S).



CURVE TABLE

NUM	ARC	RADIUS
C1	3,216	25,000
C2	14,816	25,000
C3	14,814	25,000
C4	6,423	25,000
C5	7,854	5,000
C6	9,636	25,000
C7	13,343	25,000
C8	7,287	25,000
C9	6,053	5,000
C10	5,053	25,000
C11	3,624	5,000
C12	14,815	15,000
C13	3,011	15,000
C14	11,046	15,000
C15	11,170	15,000
C16	11,893	15,000
C17	14,090	15,000
C18	7,782	15,000
C19	3,612	5,000
C20	1,801	5,000

UTM ZONE 10
 DATUM: NAD83(CSRS) 2000.0 MANLAND BC
 ESTIMATED HORIZONTAL POSITIONAL ACCURACY IS 0.1 METRES

POINT NAME	UTM NORTHING	UTM EASTING	ELLIPSOIDAL ELEVATION	COMBINED SCALE FACTOR
158	5448248.9	589485.1	8.3	0.999961901
177	5448483.1	589648.6	11.4	0.999962684

EATON LAND SURVEYING LTD.
 B.C. & CANADA LANDS SURVEYORS
 P.O. BOX 508, AGASSIZ, B.C.
 www.eatonlandsurveying.com
 Ph. (604) 796-1AND (2005)

OUR FILE: 0468 DRAWING: 0468 SUB

THIS PLAN LIES WITHIN THE FRASER VALLEY REGIONAL DISTRICT.

THIS PLAN LIES WITHIN THE JURISDICTION OF THE APPROVING OFFICER FOR THE MINISTRY OF TRANSPORTATION AND INFRASTRUCTURE.

THE FIELD SURVEY REPRESENTED BY THIS PLAN WAS COMPLETED ON THE 19th DAY OF OCTOBER, 2016.
 EDWARD C. EATON, BOLS 735